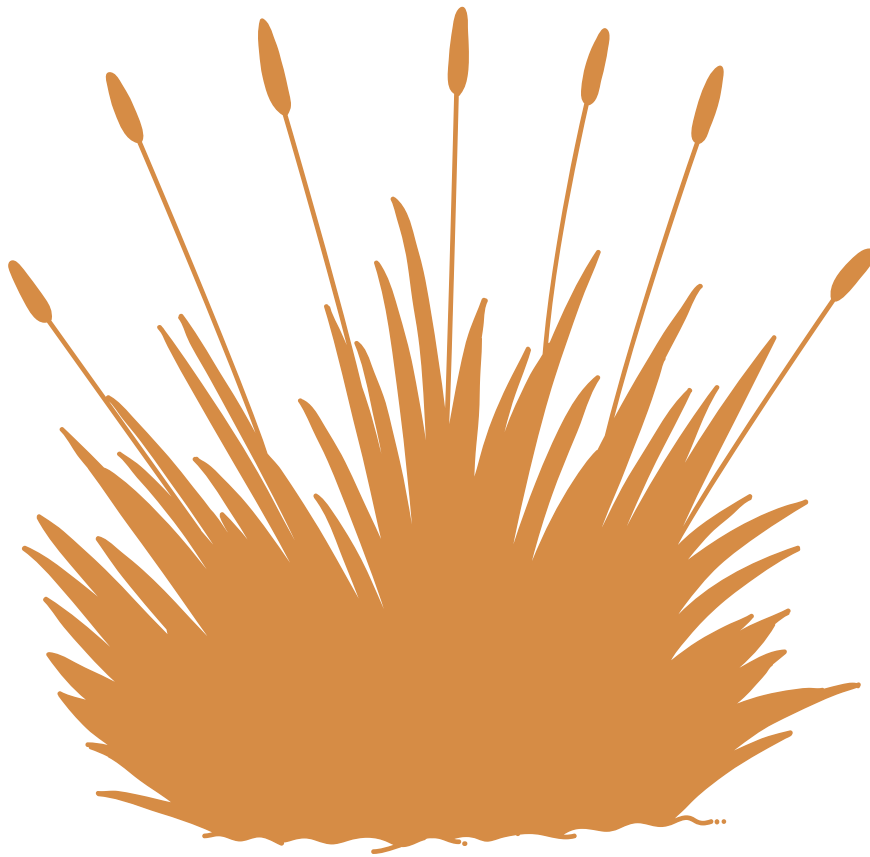




Goldfields Food Community: Snapshot Report



For more information:



foodcommunity@ecu.edu.au



[@ecufoodcommunity](https://www.facebook.com/ecufoodcommunity)



www.foodcommunity.com.au

Authors

Isabelle Chiera
Edith Cowan University

Jess Doe
Edith Cowan University

Professor Amanda Devine
Edith Cowan University

Associate Professor Melissa Stoneham
Public Health Advocacy Institute, Curtin University

Dr Stephanie Godrich
Edith Cowan University

This report can be cited as:

Chiera, I., Doe, J., Devine, A., Stoneham, M., & Godrich, S. (2024). *Goldfields Food Community: Snapshot report*. Edith Cowan University. <https://doi.org/10.25958/VMYC-8748>

For enquiries about this report, contact:

Dr Stephanie Godrich
Chief Investigator, Edith Cowan University
s.godrich@ecu.edu.au

Acknowledgements:

The Food Community team would like to acknowledge the Traditional Owners of the lands on which this project was undertaken, and pay their respects to Elders past and present. They also sincerely thank the participants for their valuable contributions and time towards this project, and for their ongoing efforts in supporting food security across Western Australia. The team would also like to acknowledge Saranne Herrington for her contribution towards project planning and data collection

Creative Commons License:



This work is licensed under a [Creative Commons Attribution-NonCommercial 4.0 License](https://creativecommons.org/licenses/by-nc/4.0/)


Contents

A snapshot of the Goldfields region demographics	2
Family composition	3
What we know about food insecurity across Australia	3
Goldfields region food problems in 2023	4
How are existing initiatives supporting regional food security in 2023?	4
Goldfields region response to food security issues in 2023	4
Goldfields region Socio-Ecological Model of food security initiatives: Levels of intervention	5
Goldfields food security systems change impact card	6
How Goldfields region initiatives are contributing towards food security systems change	7
Types of partnering organisations in the Goldfields region in 2023	9
Goldfields partnership map	9
Goldfields region partnership network map	10
Partnership Typologies	11
Ways that Goldfields region organisations are working in partnership	12
Recommendations from the Food Community project findings	14
References	15

Goldfields Food Community Snapshot

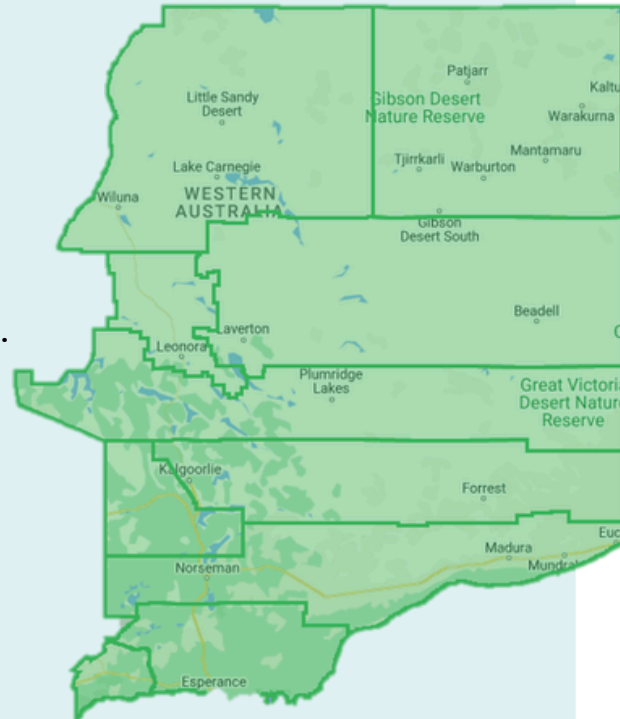
We need good quality food, in sufficient amounts, to meet our dietary needs. Regular physical, social and economic access to healthy food is called **food security** [1]. **Food insecurity** arises when people cannot regularly or reliably obtain food in adequate quantities or in socially acceptable ways for good health and wellbeing [1].

A snapshot of the Goldfields region demographics

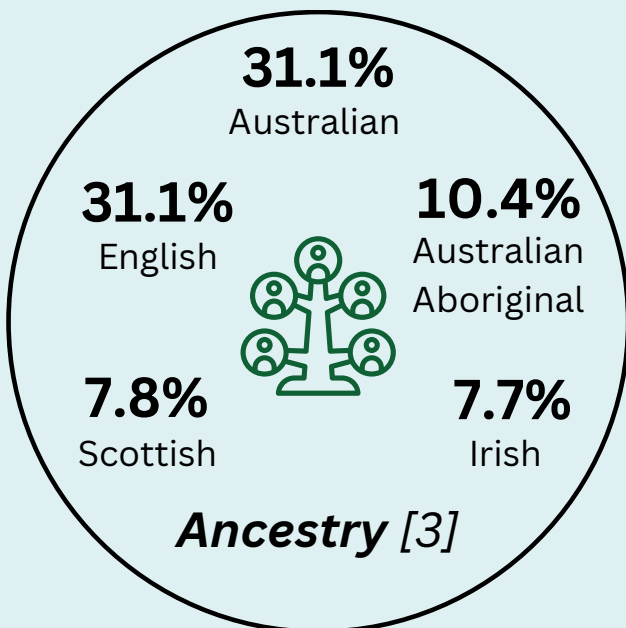
A population of  **52,348** people [2].

 **10** local government authorities [2].

955,276 square kilometres [2].



Map of the Goldfields region (Adapted from REMPLAN MapBuilder, <https://mapbuilder.remplan.com.au/>)



Employment status [3]




68.9% Worked full-time
20.5% Worked part-time
6.6% Away from work
4.0% Unemployed


Median weekly income [3]


\$1,154 - Personal
\$2,663 - Family
\$2,200 - Household



Family composition [3]



36.9%
Couple without children



45.1%
Couple family with children



16.1%
One parent family


1.9%
Other family

Tenure type [3]


19.2%
Owned outright


37.2%
Owned with a mortgage


38.2%
Rented



2.5
Average number of people per household [3]

Mortgage and rent [3]




\$150
Median weekly rent repayments



\$1,300
Median monthly mortgage repayments

What we know about food insecurity across Australia


13%
of Australian households [4].


20%
of children in regional Western Australia [5].

- Low incomes.
- Unexpected bills [6].
- Children whose families received government financial assistance are 2.6 times more likely to be food insecure [5].

Food insecurity impacts:

- Behavioural problems [7], impaired academic performance [8], low self-esteem and low self-efficacy [9].
- Compromised dietary intake, nutrient deficiencies like iron deficiency, and poor growth and development [10].
- Increased risk of heart disease [11].
- Diet-related diseases [12].
- Malnutrition among seniors [13].



Food in regional and remote areas is **expensive**, the **quality is often poorer**, **availability lower**, and **transport options reduced** [14].

Goldfields region food problems in 2023

Community and interest holder perceptions of Goldfields region food problems [15].

Food charities provide some food but not enough to make meals.

Too much red tape [to produce food].

Limited jobs. Limited personnel.

Transport: Food delivered once per week to outlying areas.

Unable to keep up with food supply/demand during tourism seasons.

Local shops not linking with charitable food organisations enough.

Low budgets influence food purchased.

Expensive, poor-quality water in limited supply.

Lack of indigenous knowledge/bushfoods knowledge passed down [generations].



How are existing initiatives supporting regional food security in 2023?* [16]



18 Addressing Food Availability

5 confirmed via an interview



42 Addressing Food Access

13 confirmed via an interview



25 Addressing Food Utilisation

13 confirmed via an interview



1 Addressing Stability

1 confirmed via an interview



1 Addressing Agency

1 confirmed via an interview



1 Addressing Sustainability


1 confirmed via an interview

Goldfields region response to food security issues in 2023** [16]

23 

Emergency Food Relief and Community Programs

6 explored via an interview

17 

Food Literacy and Health Promotion Initiatives

8 explored via an interview



8 Policies or Strategic Plans

2 explored via an interview



7 Community Gardens and Food Swapping Groups

1 explored via an interview



6 Businesses, Networks or Alliances

1 explored via an interview



2 Farmers' Markets and Food Events

1 explored via an interview

*some initiatives address multiple aspects

**some initiatives run across multiple regions and initiative types

Goldfields region Socio-Ecological Model of food security initiatives: Levels of intervention

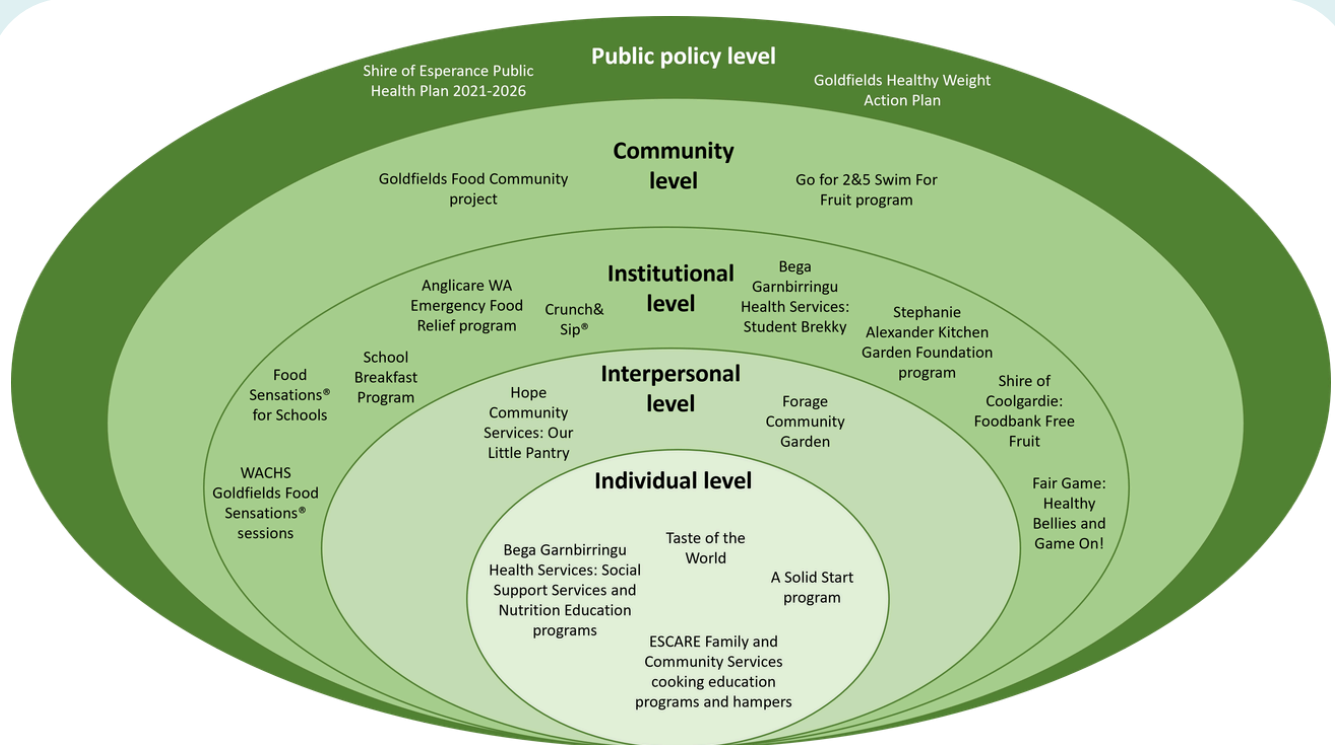


Figure 1: Goldfields region Socio-Ecological Model of food security initiatives. (Adapted from the model described by McLeroy et al. (1988) [17]).

The social-ecological model shows the different levels of intervention that these initiatives are focusing on (Figure 1). For example:

- The individual level focuses on knowledge, skills or attitudes of individual clients or people that they are working directly with.
- The interpersonal level focuses on relationships between family or social networks, or looking at the connection between them.
- The institutional level is often embedded within schools or other settings, like workplaces.
- The community level focuses on different partnerships between community organisations.
- The public policy level relates to supporting a variety of policy frameworks and initiatives.

Many Goldfields initiatives captured in interviews were operating at the institutional level, with few at a community level. It is important that all levels of intervention are represented for maximum impact.

Goldfields food security systems change impact card

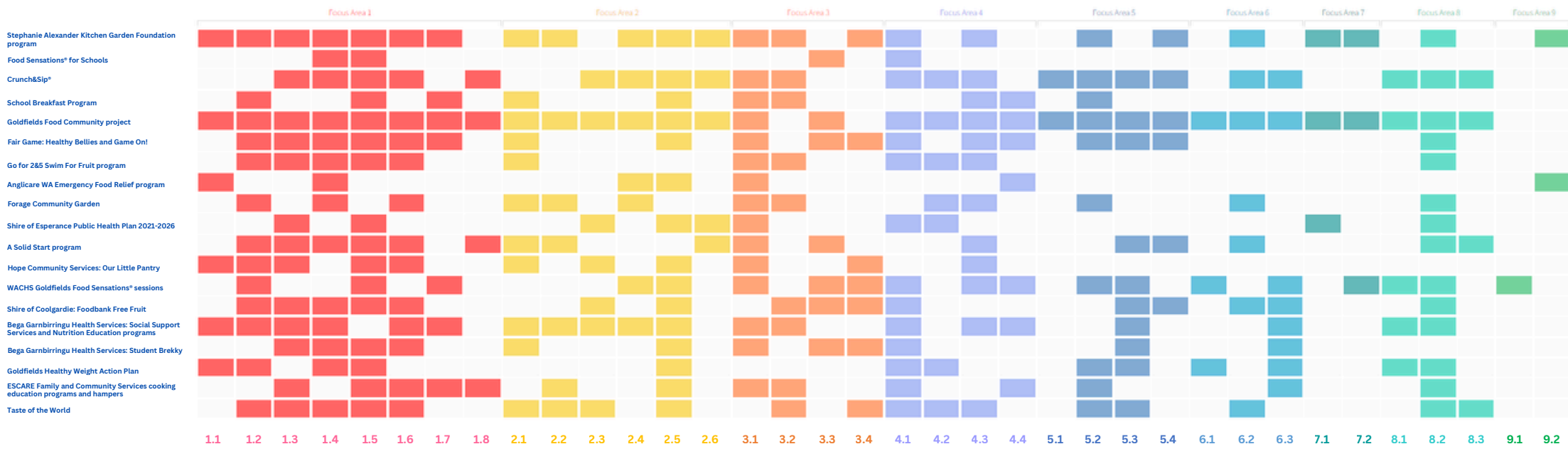
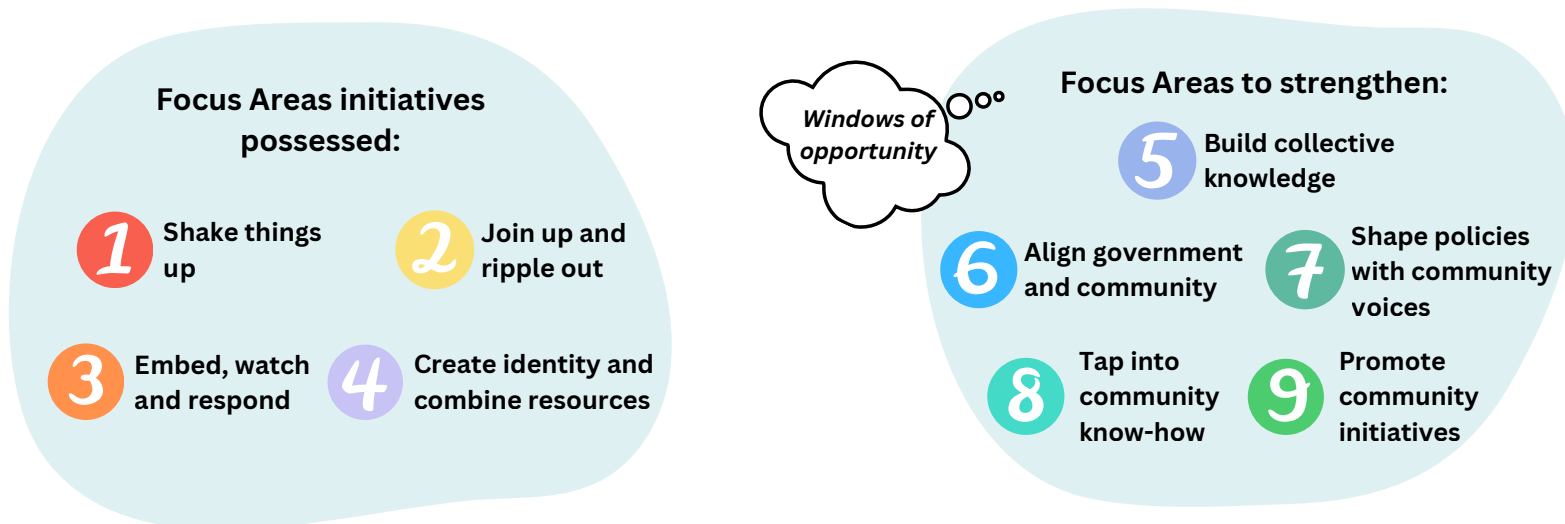


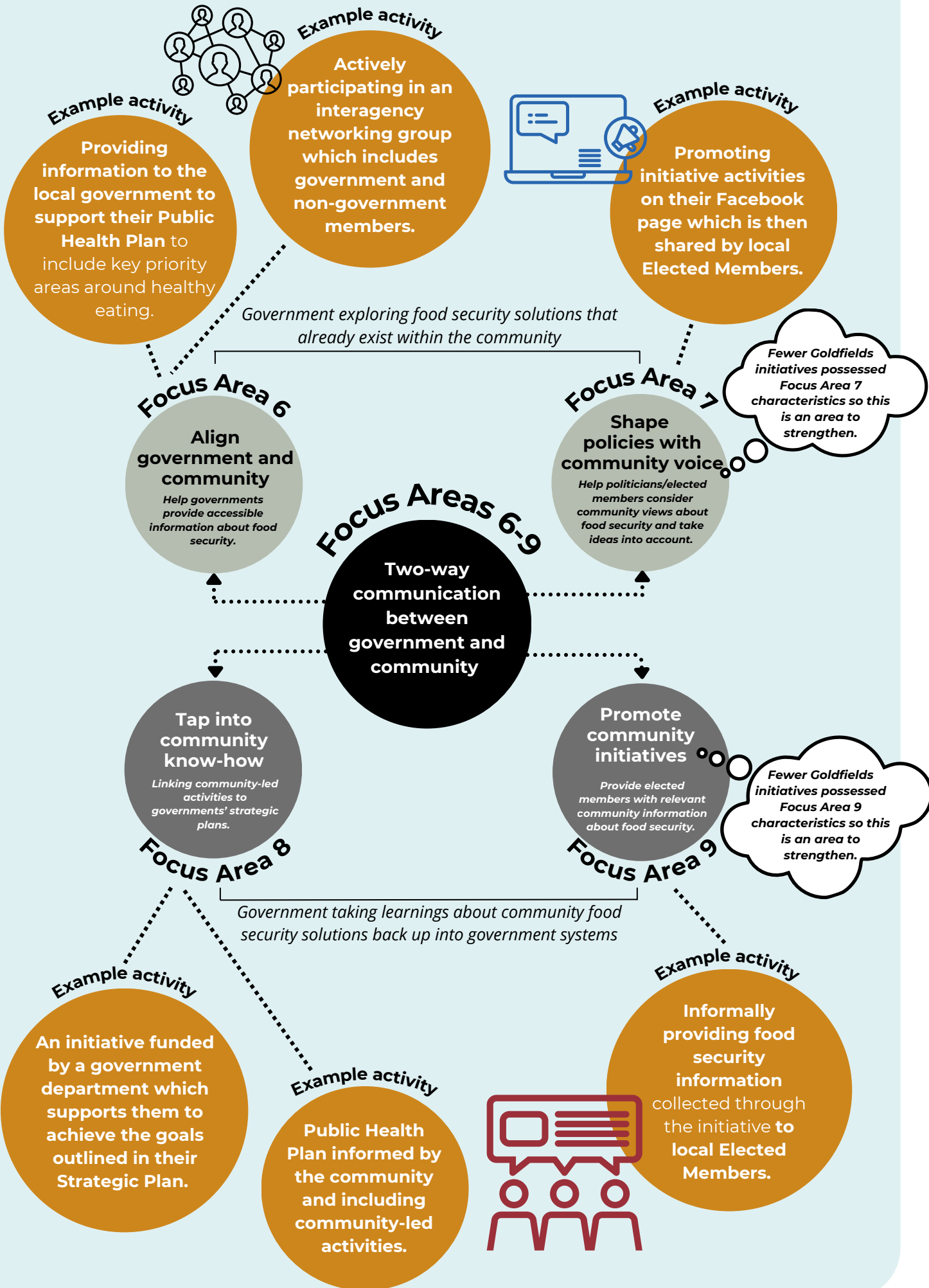
Figure 2: Goldfields food security systems change impact card. (Source: © 2023 Wicked Lab, © 2025 Eventide Systems. Tool for Systemic Change. <https://toolforsystemicchange.com>)

This impact card provides a visualisation of which systems change characteristics were most likely to be possessed by Goldfields food security initiatives in 2023. (Adapted from Godrich et al. (2025) [16]).



How Goldfields region initiatives are contributing towards food security systems change





Types of partnering organisations in the Goldfields region in 2023 [18]

26 

Non-government
or not-for-profit
organisations

8 

State government

3 

Businesses

3 

Education

2 

Aboriginal controlled
health organisation,
corporation or
traditional owner-led
organisation

2 

Local
government

1 

Community group

1 

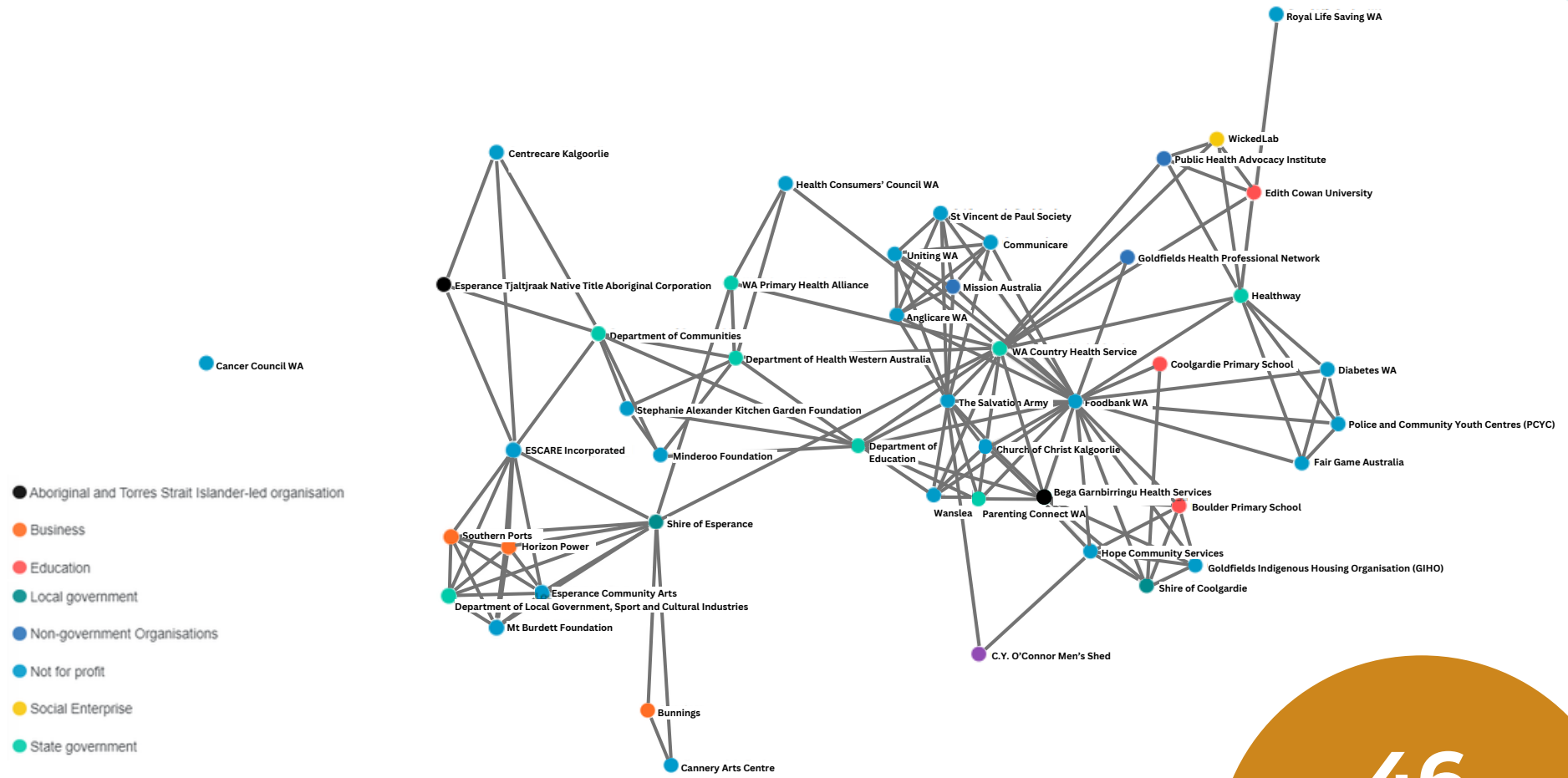
Social enterprise

Goldfields region partnership findings

- The Goldfields partnership map demonstrates a **'hub-and-spoke' model** which includes one organisation playing a central connecting role [19].
- **14 organisations were 'hubs'** in the Goldfields network. These organisations connected with more than the average number of partners and were essential to spreading information throughout different parts of the network [19].
- **One state government organisation, one not-for-profit organisation, and one local government organisation** were **critical for information sharing** [19].
- **31 organisations were connected components.** They used their partnerships to receive and share information throughout the network [19].
- **One organisation was unconnected** and they had no partnerships [19].

**See the next page for a visual representation of these findings.*

Goldfields partnership map



46
partnering
organisations

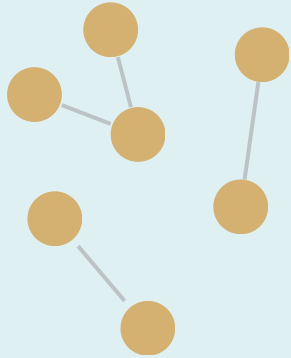
Figure 3. Goldfields Partnership Map. (Source: © 2023 Wicked Lab, © 2025 Eventide Systems. Tool for Systemic Change. <https://toolforsystemicchange.com>)

This partnership map shows all of the different partnerships and collaborations between the organisations working on food security within the Goldfields region in 2023. (Adapted from Godrich et al. (2026) [19]).

Partnership Typologies

The Goldfields partnership map demonstrates a 'hub-and-spoke' model.

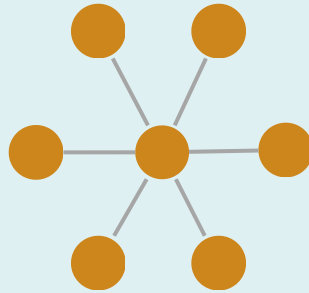
Scattered fragments model



Characteristics:

- Multiple separate clusters of partners.
- No active leaders building network.

Hub-and-spoke model



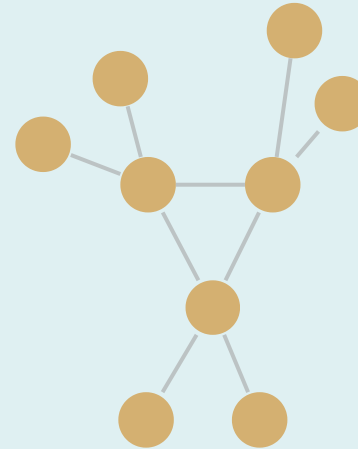
Characteristics:

- Network weavers connect individuals/groups to create information flows.
- Should be temporary network type - power concentration in hub.

Suggestions to mature the Goldfields partnership network from a 'hub-and-spoke' model to a 'multi-hub' model:

- Connect nodes that are not already connected to each other, with potential for mutual benefit.
- Develop infrastructure such as online platform with partnership toolkits.
- Implement small food security projects to increase collaboration.

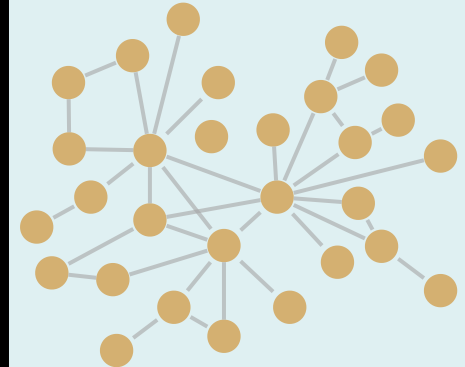
Multi-hub model



Characteristics:

- More than one hub.
- Multiple weavers connecting to each other.
- Short path lengths = fast information flow.

Core/periphery model



Characteristics:

- Central network core with strong ties.
- Periphery contains new network members, bridges outside of the network, actors/organisations spanning several communities.

Figure 4. Characteristics of network typologies and strategies to mature them. (Adapted from Godrich et al. (2026) [19], Krebs & Holley (2006) [20], Mohr (2016) [21] and Ehrlichman (2021) [22]).

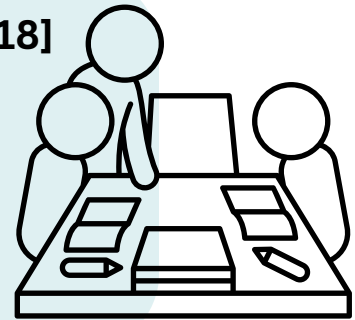
Ways that Goldfields region organisations are working in partnership

Examples from initiatives across the Goldfields region:

Collaboration, coordinated action and capacity building [18]

Partnerships focused on local community issues. For example:

- An initiative with an advisory committee made up of local government representatives and other government organisations to guide initiative implementation.



Community consultation and involvement [18]

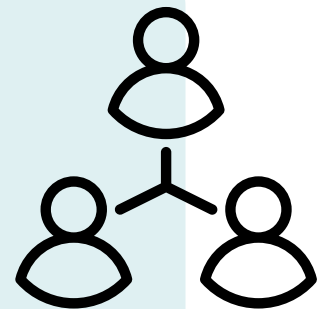
Community members were described as integral in the design and/or delivery of services. For example:

- Community members play an important role in service delivery by volunteering their time and donating resources such as food.

On-ground program and service delivery [18]

Initiatives joined to support on-ground program delivery. For example:

- Health professionals from different disciplines partnered to co-facilitate a nutrition education program.
- An initiative partnered with different staff members from the same organisation to provide a holistic service including nutrition education and financial counselling.





Funding and grants for program delivery [18]

Initiatives often received funding and grants for program delivery. For example:

- An initiative funded by multiple organisations to ensure that their event can be free and accessible to the whole community.
- A nutrition education initiative partially funded by the organisations that request the workshops.

Food and financial donations [18]

Some food relief initiatives received food donations from larger not-for-profits. For example:

- A local government-led initiative partnered with a larger not-for-profit organisation to redistribute excess food to the community.



Recommendations from the Food Community project findings



Recommendations to support the current food security system to shift towards a more effective way of working [16]:

- Goldfields food security initiative leaders could **strengthen their food security impact by enhancing Focus Area 7 attributes**, such as in the following ways:
 - **Engaging government representatives** in program activities or speaking with them about their food initiative, **to increase their understanding of how it supports food security.**
 - **Sharing community member views about food security with government representatives.**
 - **Supporting government representatives to talk about food security** in a way that community members can understand and use.
 - **Undertaking government advocacy, to get food security on their agenda and actioned.**
- Goldfields food security initiative leaders could **strengthen their food security impact by enhancing Focus Area 9 attributes**, such as in the following ways:
 - **Advocating to local, state or federal government about addressing food security.**
 - Ensuring their **initiative is listed on the Food Community website ‘Initiative Directory’** – as a project register relevant to the local government area.
- **Food security initiatives should consider the ‘big picture’ of food security** (including broader political, social, technological, economic, national and international forces that affect local food security efforts) when sharing information with their networks and undertaking food security activities.
- Support **better collaborations between government and community organisations.**



Recommendations to strengthen WA regions’ partnership networks [18, 19]:

- **Organisations should identify and document (through adaptable formal partnership agreements) clear partnership purposes, roles, and actions.**
- If desired, **the one unconnected organisation should be supported to connect into their partnership network.** This could be achieved through creating a bank of region-based partnership opportunities e.g. the Food Community website (www.foodcommunity.com.au) and interagency networking groups.
- **The Goldfields region network should be supported to shift across the network stages.** E.g. by connecting organisations, increasing collaboration on small food security projects, bringing in new organisations, and implementing ways to share information.

References:

1. Committee on World Food Security. (2012). Coming to terms with terminology. Committee on World Food Security: Rome, Italy.
2. Regional Development Australia Goldfields Esperance. (n.d.). Regional Information. <https://www.rdage.com.au/regional-information/>
3. Australian Bureau of Statistics. (2021). Goldfields: 2021 Census All persons QuickStats. <https://www.abs.gov.au/census/find-census-data/quickstats/2021/51103>
4. Australian Bureau of Statistics. (2023). Food insecurity. ABS. <https://www.abs.gov.au/statistics/health/food-and-nutrition/food-insecurity/latest-release>.
5. Godrich, S., Lo, J., Davies, C., Darby, J., & Devine, A. (2017). Prevalence and socio-demographic predictors of food insecurity among regional and remote Western Australian children. *Australian and New Zealand journal of public health*, 41(6), 585–590. <https://doi.org/10.1111/1753-6405.12716>
6. Foodbank Australia. (2021). Foodbank Hunger Report 2021: The reality of the food crisis facing Australia. <https://reports.foodbank.org.au/foodbank-hunger-report-2021/>
7. Rose-Jacobs, R., Black, M. M., Casey, P. H., Cook, J. T., Cutts, D. B., Chilton, M., Heeren, T., Levenson, S. M., Meyers, A. F., & Frank, D. A. (2008). Household food insecurity: associations with at-risk infant and toddler development. *Pediatrics*, 121(1), 65–72. <https://doi.org/10.1542/peds.2006-3717>
8. Lindberg, R., Lawrence, M., Gold, L., Friel, S., & Pegram, O. (2015). Food insecurity in Australia: Implications for general practitioners. *Australian family physician*, 44(11), 859–862.
9. Godrich, S. L., Loewen, O. K., Blanchet, R., Willows, N., & Veugelers, P. (2019). Canadian Children from Food Insecure Households Experience Low Self-Esteem and Self-Efficacy for Healthy Lifestyle Choices. *Nutrients*, 11(3), 675. <https://doi.org/10.3390/nu11030675>
10. Ashiabi, G. S., & O’Neal, K. K. (2008). A framework for understanding the association between food insecurity and children’s developmental outcomes. *Child Development Perspectives*, 2(2), 71–77. <https://doi.org/10.1111/j.1750-8606.2008.00049.x>
11. Vercammen, K. A., Moran, A. J., McClain, A. C., Thorndike, A. N., Fulay, A. P., & Rimm, E. B. (2019). Food Security and 10-Year Cardiovascular Disease Risk Among U.S. Adults. *American journal of preventive medicine*, 56(5), 689–697. <https://doi.org/10.1016/j.amepre.2018.11.016>
12. Thomas, M. K., Lammert, L. J., & Beverly, E. A. (2021). Food Insecurity and its Impact on Body Weight, Type 2 Diabetes, Cardiovascular Disease, and Mental Health. *Current cardiovascular risk reports*, 15(9), 15. <https://doi.org/10.1007/s12170-021-00679-3>
13. Pereira, M. H. Q., Pereira, M. L. A. S., Campos, G. C., & Molina, M. C. B. (2022). Food insecurity and nutritional status among older adults: a systematic review. *Nutrition reviews*, 80(4), 631–644. <https://doi.org/10.1093/nutrit/nuab044>
14. Godrich, S. L., Davies, C. R., Darby, J., & Devine, A. (2017). What are the determinants of food security among regional and remote Western Australian children?. *Australian and New Zealand journal of public health*, 41(2), 172–177. <https://doi.org/10.1111/1753-6405.12636>

15. Godrich, S., Doe, J., Goodwin, S., Stoneham, M., Devine, A. (2025). Lived Experience of Regional and Remote Food Systems: Barriers to and Enablers of Food Access in Western Australia. *Health Promotion Journal of Australia*, 36(2), 1-13.
<https://doi.org/10.1002/hpja.70002>
16. Godrich, S. L., Chiera, I., Doe, J., Herrington, S., Stoneham, M., Devine, A., & Humphreys, E. (2025). Food security systems change: a case study from rural, regional, and remote Australia. *Agriculture and Human Values*. <https://doi.org/10.1007/s10460-025-10795-0>
17. McLeroy, K., Bibeau, D., Steckler, A. and Glanz, K. (1988) An ecological perspective on health promotion programs. *Health Education Quarterly*, 15, 351–377.
18. Godrich, S. L., Chiera, I., Stoneham, M., Doe, J., Devine, A., & Humphreys, E. (2025). Increasing the Effectiveness of Rural, Regional and Remote Food Security Initiatives Through Place-Based Partnerships—A Qualitative Study. *Health Promotion Journal of Australia*, 36(3), e70048. <https://onlinelibrary.wiley.com/doi/full/10.1002/hpja.70048>
19. Godrich, S. L., Chiera, I., Stoneham, M., Doe, J., Devine, A., & Humphreys, E. (2026). Using Social Network Analysis to Visualise Place-Based Partnerships for Systems Change in Regional Australia. *Health Promotion Journal of Australia*, 37(2), e70150.
<https://doi.org/10.1002/hpja.70150>
20. Krebs, V., & Holley, J. (2006). Building smart communities through network weaving. *Appalachian Center for Economic Networks*, 1-18.
21. Mohr, J. (2016). Building intentional networks that drive impact (part 1).
<https://jeffcmohr.medium.com/building-intentional-networks-that-drive-impact-part-1-f2396e51e81>
22. Ehrlichman, David. *Impact networks: Create connection, spark collaboration, and catalyze systemic change*. Berrett-Koehler Publishers, 2021.
23. Chiera, I., Doe, J., Stoneham, M., Herrington, S., Devine, A., Humphreys, E., & Godrich, S. L. (2025). ‘More prioritisation on food security’ – exploring what initiative leaders envision for a food secure regional Australia. *Health & Place*, 95, 103543.
<https://doi.org/10.1016/j.healthplace.2025.103543>