

## Goldfields Food Community 'Connect' Projects 2022/2023

This document provides a list of food security initiatives in the Goldfields region mapped by the Food Community project team.

Scan the QR code to view this information on the Food Community website:



### Community Gardens and Food Swapping Groups

#### Aboriginal Bush Food and Medicine Garden

**Description:** From the Ruby Saltbush to the River Mint, the Museum of the Goldfield's Aboriginal Bush Food and Medicine Garden showcases plants from across the Goldfields region and beyond.

Food security aspect/s addressed:  
Food availability  
Food access  
Food utilisation

\*Unconfirmed by the Food Community team

**Website:** [www.visit.museum.wa.gov.au/goldfields/garden](http://www.visit.museum.wa.gov.au/goldfields/garden)

**Telephone:** 1300 134 081

**Email:** [reception@museum.wa.gov.au](mailto:reception@museum.wa.gov.au)

**Location:** 17 Hannan Street, Kalgoorlie/Karlkurla, WA 6430

#### Esperance Tjaltjraak Native Title Aboriginal Corporation: Native Seed and Bush Food Orchard

**Description:** This orchard aims to drive Tjaltjraa, rejuvenation projects. healing Country, providing sustainable outcomes for the Wudjari community, and feed the broader Esperance community local bush foods.

Visit their website for more information.

Food security aspect/s addressed:  
Food availability  
Food access  
Food utilisation

\*Unconfirmed by the Food Community team.

**Website:** [www.etntac.com.au/](http://www.etntac.com.au/)

**Telephone:** (08) 9072 0094

**Email:** [admin@etntac.com.au](mailto:admin@etntac.com.au)

**Location:** 11A Shelden Road, Chadwick, WA 6450

## Food is Free Esperance

**Description:** Food swapping Facebook page for the Esperance area.

Visit their website for more information.

Food security aspect/s addressed:  
Food access

\*Unconfirmed by the Food Community team

**Website:** [www.facebook.com/foodisfreeEsperanceWA/](http://www.facebook.com/foodisfreeEsperanceWA/)

## Forage Community Garden

**Description:** Head down to the Cannery Arts Centre, and off to the left-hand side off Norseman Road, you will find the Forage Community Garden attached to the far side of the Innerspace Building. They aim strike inspiration into the hearts of would-be gardeners and spread an appreciation for nature in our community. Taking part in the Forage Community Garden is a fantastic way to engage with your neighbourhood and support the green spaces around the Cannery Arts Centre. Forage Garden also serves as a nutritious source of fresh produce to take home. Morning tea is provided. FREE to attend and no registrations needed.

Visit their website for more information.

Food security aspect/s addressed:  
Food availability  
Food access

\*Confirmed by the Food Community team via an interview

**Website:** [www.canneryartscentre.com.au/workshops/forage-community-garden](http://www.canneryartscentre.com.au/workshops/forage-community-garden)

**Telephone:** (08) 9071 3599

**Email:** [admin@canneryarts.com.au](mailto:admin@canneryarts.com.au)

**Location:** 1018 Norseman Road, Esperance, WA 6450

## Grow Free Cart

**Description:** The City of Kalgoorlie-Boulder is proud to partner with Grow Free, a creative initiative to allow the community to connect over fresh produce. Members of the community can donate, take or swap fresh produce that they have grown on this cart. This initiative promotes a sustainable culture of growing and sharing healthy food and other resources with our neighbours. You give what you can, and take what you need.

Food security aspect/s addressed:  
Food access

\*Unconfirmed by the Food Community team

**Website:** [www.ckb.wa.gov.au/our-community/community-services/grow-free-cart.aspx](http://www.ckb.wa.gov.au/our-community/community-services/grow-free-cart.aspx)

**Email:** [mailbag@ckb.wa.gov.au](mailto:mailbag@ckb.wa.gov.au)

## Kalgoorlie-Boulder Community Garden

**Description:** Community garden in Kalgoorlie-Boulder.

Visit their website for more information.

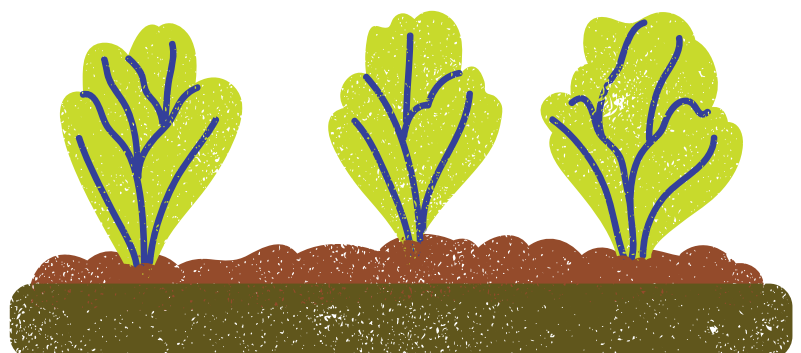
Food security aspect/s addressed:  
Food availability  
Food access

\*Unconfirmed by the Food Community team.

**Website:** [www.facebook.com/KBCommunityGarden/](http://www.facebook.com/KBCommunityGarden/)

**Email:** [CommunityGardenKB@gmail.com](mailto:CommunityGardenKB@gmail.com)

**Location:** Memorial Drive, Kalgoorlie-Boulder, WA 6430





## Farmers' Markets and Food Events

### Esperance Growers Market

**Description:** Growers market held every second Saturday morning from 9-11am at the Esperance Scout Hall on the Esplanade.

Food security aspect/s addressed:  
Food availability

\*Unconfirmed by the Food Community team

**Website:** [www.facebook.com/esperancegrowersmarket/](https://www.facebook.com/esperancegrowersmarket/)

**Email:** [esperancegrowersmarket@hotmail.com](mailto:esperancegrowersmarket@hotmail.com)

**Location:** Esperance Scout Hall, Esperance, WA 6450

### Taste Of The World

**Description:** Taste of the World is a family event to celebrate multiculturalism in Esperance. Go along and try food from different cultures, enjoy different activities or share your cultural background!

Visit their website for more information.

Food security aspect/s addressed:  
Food availability  
Food utilisation

\*Confirmed by the Food Community team via an interview

**Website:** [www.esperancecommunityarts.org.au/taste-of-the-world/#:~:text=Taste%20of%20the%20World%202023%20is%20coming%20up%20on%20Mon](http://www.esperancecommunityarts.org.au/taste-of-the-world/#:~:text=Taste%20of%20the%20World%202023%20is%20coming%20up%20on%20Mon)

**Telephone:** 0481 840 124

**Email:** [admin@esperancecommuntiyarts.org.au](mailto:admin@esperancecommuntiyarts.org.au)



## Food Literacy and Health Promotion Projects

### Crunch&Sip®

**Description:** Crunch&Sip is a primary school nutrition program. Teachers at Crunch&Sip schools set a time each day for students to eat vegetables and fruit in the classroom. Students are also encouraged to regularly drink from their water bottle.

Visit their website for more information.

Food security aspect/s addressed:  
Food utilisation

\*Confirmed by the Food Community team via an interview

**Website:** [www.crunchandsip.com.au/](http://www.crunchandsip.com.au/)

### EON Foundation school garden program

**Description:** EON Foundation delivers a nutrition-focused, healthy lifestyle and disease prevention program - the EON Thriving Communities Program.

Visit their website for more information.

Food security aspect/s addressed:  
Food utilisation

\*Confirmed by the Food Community team via an interview

**Website:** [www.eon.org.au/](http://www.eon.org.au/)

**Telephone:** (08) 9381 5403

**Email:** [admin@eon.org.au](mailto:admin@eon.org.au)

## EPIC Goldfields: Garden Gurus program

**Description:** Each Tuesday EPIC Goldfields hosts their Gardening Gurus Group.

Visit their website for more information.

Food security aspect/s addressed:  
Food utilisation

\*Unconfirmed by the Food Community team

**Website:** [www.facebook.com/EPICGoldfields/](http://www.facebook.com/EPICGoldfields/)

**Telephone:** (08) 9185 0071

**Email:** [Kalgoorlie@empoweringpeople.org.au](mailto:Kalgoorlie@empoweringpeople.org.au)

**Location:** 160 Wilson St, South Kalgoorlie, WA 6430

## Escare Incorporated programs

**Description:** Escare Family and Community Services focuses on providing a range of services to increase the capacity of individuals and families, to assist with daily living challenges and to enrich community life.

Programs include:

- Financial Counselling
- Dardy Grub Cooking Club
- Women's Learning for Life program

Visit their website for more information.

Food security aspect/s addressed:  
Food access  
Food utilisation

\*Confirmed by the Food Community team via an interview

**Website:** [www.escare.org.au/](http://www.escare.org.au/)

**Telephone:** (08) 9071 3110

**Email:** [contact@escare.org.au](mailto:contact@escare.org.au)

**Location:** Unit 8/53 The Esplanade, Esperance, WA 6450

## Fair Game Australia: My Healthy Bellies and My Healthy Communities initiatives

**Description:** FAIR GAME provides unique health & fitness programs and recycled sports equipment, building the capacity of under-serviced communities to promote healthy lifestyle choices and live healthier lives.

Visit their website for more information.

Food security aspect/s addressed:  
Food utilisation

\*Confirmed by the Food Community team via an interview

**Website:** [www.fairgame.org.au/](http://www.fairgame.org.au/)

**Email:** [info@fairgame.org.au](mailto:info@fairgame.org.au)

## Food Ladder

**Description:** Food Ladder's School Greenhouse Systems are specifically designed to be fully owned and run by the chosen school, with support from the Food Ladder team. Schools are carefully selected, with a key focus on supporting regional, rural and remote schools, schools with a low Index of Community Socio-Educational Advantage (ICSEA) value, and schools with a high number of Aboriginal and Torres Strait Islander students.

Visit their website for more information.

Food security aspect/s addressed:  
Food availability  
Food access  
Food utilisation

\*Unconfirmed by the Food Community team

**Website:** [www.foodladder.org/leonora-wa/](http://www.foodladder.org/leonora-wa/)

**Email:** [info@foodladder.org](mailto:info@foodladder.org)

## Food Sensations® for Schools

**Description:** Hands on nutrition education and cooking in School Breakfast Program schools.

Visit their website for more information.

Food security aspect/s addressed:  
Food utilisation

\*Confirmed by the Food Community team via an interview

(Please note that this program has ceased.)

**Website:** [www.foodbank.org.au/WA/healthy-eating-cooking-programs/?state=wa](http://www.foodbank.org.au/WA/healthy-eating-cooking-programs/?state=wa)

## Go for 2&5 Swim For Fruit program

**Description:** The Go for 2&5 Regional and Remote Aboriginal Communities Swimming Program (Swim for Fruit) provides support for an after school and weekend lap swimming program and expands on the school-based Swim and Survive program in regional and remote Aboriginal communities.

Visit their website for more information.

Food security aspect/s addressed:  
Food utilisation

\*Confirmed by the Food Community team via an interview

**Website:** [www.royallifesavingwa.com.au](http://www.royallifesavingwa.com.au)

**Telephone:** (08) 9383 8200

## Leonora Early Learning Centre: Cooking program

**Description:** The children participate in cooking with staff once a week at the centre and are able to enjoy making yummy treats together, such as cookies, scones and even biscuits. They learn basic mathematical concepts while measuring ingredients and exploring various textures, colours and ingredients.

Visit their website for more information.

Food security aspect/s addressed:  
Food utilisation

\*Unconfirmed by the Food Community team

**Website:** [www.leonora.wa.gov.au/locals/facilities/leonora-child-care-centre.aspx#:~:text=The%20children%20participate%20in%20cook](http://www.leonora.wa.gov.au/locals/facilities/leonora-child-care-centre.aspx#:~:text=The%20children%20participate%20in%20cook)

**Telephone:** (08) 9037 7997

**Email:** [kidzcare@leonora.wa.gov.au](mailto:kidzcare@leonora.wa.gov.au)

**Location:** Lot 138 Hoover Street, Leonora, WA 6438

## Seniors Staying Connected: Healthy Eating Cooking Classes

**Description:** Fortnightly, the Shire of Coolgardie will host up to 20 senior residents and take them on an outing for up to 3-hours. Outings may include morning tea at a local café, trips to the movies or supermarket, lawn bowls, museum tours and healthy eating cooking classes.

Visit their website for more information.

Food security aspect/s addressed:  
Food utilisation

\*Unconfirmed by the Food Community team

**Website:** [www.coolgardie.wa.gov.au/community/seniors/seniors-staying-connected.aspx](http://www.coolgardie.wa.gov.au/community/seniors/seniors-staying-connected.aspx)

**Telephone:** (08) 9080 2111

**Email:** [mail@coolgardie.wa.gov.au](mailto:mail@coolgardie.wa.gov.au)

## Shire of Esperance: Food Safety training

**Description:** The FoodSafe Online program is available free of charge through the Shire of Esperance. This is a self-paced online learning tool that food business operators can use to train their staff to minimum compliance levels in hygiene standards.

Visit their website for more information.

Food security aspect/s addressed:  
Food utilisation

\*Unconfirmed by the Food Community team

**Website:** [www.esperance.wa.gov.au/food-safety-hygiene](http://www.esperance.wa.gov.au/food-safety-hygiene)

**Telephone:** (08) 9071 0666

**Email:** [shire@esperance.wa.gov.au](mailto:shire@esperance.wa.gov.au)

## A Solid Start program

**Description:** The Solid Start is a free program for parents or carers who have a baby over 4 months of age, and want information or have questions on starting their baby on solid food.

Visit their website for more information.

Food security aspect/s addressed:  
Food utilisation

\*Confirmed by the Food Community team via an interview

**Website:** [www.caHS.health.wa.gov.au/Our-services/Community-Health/Child-Health/Parenting-groups/A-Solid-Start](http://www.caHS.health.wa.gov.au/Our-services/Community-Health/Child-Health/Parenting-groups/A-Solid-Start)

## Stephanie Alexander Kitchen Garden Foundation

**Description:** The Stephanie Alexander Kitchen Garden Program enables children and young people to form positive food, health, sustainability, and wellbeing habits for life through 'pleasurable food education' delivered in hands-on kitchen and garden classes. The Program offers models from early learning through to primary and secondary years. Operating in over 1000 schools nationally, it has impacted over a million children and young people in the 20 years since inception.

With a vision to see healthy children and young people living in sustainable communities across Australia, the Stephanie Alexander Kitchen Garden Foundation also works collaboratively with local communities, local government and community organisations on place-based responses to local health challenges.

Food security aspect/s addressed:  
Food utilisation

\*Confirmed by the Food Community team via an interview

**Website:** [www.kitchengardenfoundation.org.au/](http://www.kitchengardenfoundation.org.au/)

## WA Country Health Service Goldfields Food Sensations program

**Description:** WACHS Goldfields delivers the Food Sensations program across the region which is a literacy program that aims to improve food choices through nutrition education.

Visit their website for more information.

Food security aspect/s addressed:  
Food utilisation

\*Confirmed by the Food Community team via an interview

**Website:** [www.wacountry.health.wa.gov.au/Our-services/Goldfields/Goldfields-health-services](http://www.wacountry.health.wa.gov.au/Our-services/Goldfields/Goldfields-health-services)



## Emergency Food Relief and Community Programs

### Anglicare WA: Emergency Relief Food Access Service

**Description:** Emergency food relief service.

Visit their website for more information.

Food security aspect/s addressed:  
Food access

\*Confirmed by the Food Community team via an interview

**Website:** [www.anglicarewa.org.au/](http://www.anglicarewa.org.au/)

**Telephone:** 1300 11 44 46

**Email:** [info@anglicarewa.org.au](mailto:info@anglicarewa.org.au)

### Bega Garnbirringu Health Services: Social Support Services and Nutrition Education Programs

**Description:** Bega Garnbirringu Health Services provides a range of services including:

- Community Safety and Wellbeing
- Connected Beginnings
- Environmental Health Support
- Homelessness services
- NDIS
- Orange Sky
- Sobering Up Centre
- Tackling Indigenous Smoking
- Youth Support Program

Visit their website for more information.

Food security aspect/s addressed:  
Food access

\*Confirmed by the Food Community team via an interview

**Website:** [www.bega.org.au/social-support/services/](http://www.bega.org.au/social-support/services/)

**Telephone:** 1800 037 037

**Email:** [info@bega.org.au](mailto:info@bega.org.au)

## Bega Garnbirringu Health Services: Student Brekky

**Description:** The Bega Garnbirringu Health Services Youth team prepares and offers breakfast to students every Friday at the Shire of Coolgardie. They also run programs at the Boulder Primary School.

Visit their website for more information.

Food security aspect/s addressed:  
Food access

\*Confirmed by the Food Community team via an interview

**Website:** [www.bega.org.au/social-support/services/](http://www.bega.org.au/social-support/services/)

**Telephone:** 1800 037 037

**Email:** [info@bega.org.au](mailto:info@bega.org.au)

## Centrecare: Goldfields Financial Counselling Service

**Description:** Goldfields Financial Counselling Service provides confidential counselling support and educational programs for people experiencing financial difficulties. Services are available in Kalgoorlie, Coolgardie, Kambalda, Menzies, Leonora, Laverton and Norseman.

Visit their website for more information.

Food security aspect/s addressed:  
Food access

\*Unconfirmed by the Food Community team

**Website:** [www.centrecare.com.au/rural-services/financial-counselling-services/goldfields-financial-counselling-service](http://www.centrecare.com.au/rural-services/financial-counselling-services/goldfields-financial-counselling-service)

**Telephone:** (08) 9325 6644

**Email:** [enquiries@centrecare.com.au](mailto:enquiries@centrecare.com.au)

**Location:** 168 Egan Street, Kalgoorlie WA 6430

## Eastern Goldfields Community Centre In-Centre Meals Program

**Description:** The Eastern Goldfields In-Centre Meals Program will be served twice a week on Wednesday and Friday from 11.30am-12.30pm. Pre-ordering meals is required. This can be done in person at the EGCC or by calling the Centre on 9021 9801.

Visit their website for more information.

Food security aspect/s addressed:  
Food access

\*Unconfirmed by the Food Community team

**Website:** [www.ckb.wa.gov.au/egcc-in-centre-meals-program.aspx#:~:text=How%20to%20order%20your%20meal,the%20Centre%20on%209021%209](http://www.ckb.wa.gov.au/egcc-in-centre-meals-program.aspx#:~:text=How%20to%20order%20your%20meal,the%20Centre%20on%209021%209)

**Telephone:** (08) 9021 9801

**Email:** [mailbag@ckb.wa.gov.au](mailto:mailbag@ckb.wa.gov.au)

**Location:** 13 Roberts Street, Kalgoorlie S WA, 6430

## Esperance Care Services: Emergency Relief Services

**Description:** Esperance Care Services is there to provide emergency financial relief in the form of food vouchers and food hampers. If required, emergency assistance in the form of basic living needs such as clothing, bedding and basic household necessities can also be provided to people in Esperance and the surrounding communities.

What to bring to your Emergency Relief appointment:

- Your Centrelink statement
- Your income statement or payslip if you have one
- The bill you need us to help you pay (if you need assistance with a bill)

Visit their website for more information.

Food security aspect/s addressed:  
Food access

\*Unconfirmed by the Food Community team

**Website:** [www.esperancecareservices.org.au/emergency-relief/](http://www.esperancecareservices.org.au/emergency-relief/)

**Telephone:** (08) 9071 6310

**Email:** [ecs@westnet.com.au](mailto:ecs@westnet.com.au)

**Location:** 2 Gilpin Street, Chadwick WA, 6450

## Foodbank Kalgoorlie

**Description:** Provides services including:

- Emergency food relief
- Personal care and hygiene
- Lifestyle programs

Open: Wed-Fri 8.30am-2.30pm

Visit their website for more information.

Food security aspect/s addressed:

Food access

\*Unconfirmed by the Food Community team

**Website:** [www.foodbank.org.au/?state=wa](http://www.foodbank.org.au/?state=wa)

**Telephone:** (08) 9093 0284

**Email:** [kalgoorlie@foodbankwa.org.au](mailto:kalgoorlie@foodbankwa.org.au)

**Location:** 175 Forrest Street, Boulder, WA 6432

## Hope Community Services: Men's Bush Trips

**Description:** Held once a month with the goal to create a safe space for men to connect with other men and build healthy, positive relationships that in turn have a positive impact on their families and the wider community.

"Eat. Yarn. Support."

Visit their website for more information.

Food security aspect/s addressed:

Food access

Food utilisation

\*Unconfirmed by the Food Community team

**Website:** [www.facebook.com/HopeCommunityServicesWa?locale=cs\\_CZ](http://www.facebook.com/HopeCommunityServicesWa?locale=cs_CZ)

**Telephone:** (08) 9497 9498

**Email:** [info@hopecs.org.au](mailto:info@hopecs.org.au)

**Location:** 48 Brookman Street, Kalgoorlie, WA 6430

## Hope Community Services: Our Little Pantry

**Description:** Our Little Pantry is a community-led pantry which was established in 2018. The essence of the initiatives is "a need for food, a need to give". Hope Community Services provides the space for the pantry and the community works together to fill it with food and other items.

Visit their website for more information.

Food security aspect/s addressed:

Food access

\*Confirmed by the Food Community team via an interview

**Website:** [www.facebook.com/HopeCommunityServicesWa/posts/our-little-pantry-opened-on-the-28th-december-and-has-been-warmly-embrac](http://www.facebook.com/HopeCommunityServicesWa/posts/our-little-pantry-opened-on-the-28th-december-and-has-been-warmly-embrac)

**Telephone:** (08) 9497 9498

**Email:** [info@hopecs.org.au](mailto:info@hopecs.org.au)

**Location:** 48 Brookman Street, Kalgoorlie, WA 6430

## Hope Community Services: Kalgoorlie Summer Support Hub

**Description:** The Hub has a shop front where the public are invited to come in for a coffee, a chat, and a meal. The Hub also connects people with housing services, counselling, family domestic violence support, access to showers, laundry services, medical facilities, food, and transport back to their communities.

Visit their website for more information.

Food security aspect/s addressed:

Food access

\*Unconfirmed by the Food Community team

**Website:** [www.facebook.com/HopeCommunityServicesWa/photos/a.851348468271049/5114225685316618/?type=3c](http://www.facebook.com/HopeCommunityServicesWa/photos/a.851348468271049/5114225685316618/?type=3c)

**Telephone:** (08) 9497 9498

**Email:** [info@hopecs.org.au](mailto:info@hopecs.org.au)

**Location:** 48 Brookman Street, Kalgoorlie, WA 6430

## Kalgoorlie Christmas in the Park

**Description:** Christmas in the Park is a unique, free community event held on Christmas Day. They aim to provide those in attendance, with a free Christmas lunch and treats, plenty of safe activities and play opportunities as well as a visit from Santa who hands out gifts to the children.

Visit their website for more information.

Food security aspect/s addressed:

Food access

\*Unconfirmed by the Food Community team

**Website:** [www.kalgoorlietourism.com/whats-on/event/143762-christmas-in-the-park](http://www.kalgoorlietourism.com/whats-on/event/143762-christmas-in-the-park)

## Meals on Wheels Coolgardie

**Description:** Meals On Wheels service provides a nutritious meal delivered to your door by a volunteer or Shire Officer twice a week.

Visit their website for more information.

Food security aspect/s addressed:

Food access

\*Unconfirmed by the Food Community team

**Website:** [www.coolgardie.wa.gov.au/community/seniors/meals-on-wheels.aspx](http://www.coolgardie.wa.gov.au/community/seniors/meals-on-wheels.aspx)

**Telephone:** (08) 9080 2111

**Email:** [mail@coolgardie.wa.gov.au](mailto:mail@coolgardie.wa.gov.au)

## Nutha Way

**Description:** An Indigenous youth capacity building and leadership program working to build and strengthen relationships between young people, their communities, the justice system and the Police. Nutha Way champions the voices of Indigenous young people across WA, asks for their input on how to solve the big issues they face and works with them to create a more positive future for them and their communities. They run program including the 4 o'clock feed.

Visit their website for more information.

Food security aspect/s addressed:

Food access

Food utilisation

\*Unconfirmed by the Food Community team

**Website:** [www.nuthaway.org.au/](http://www.nuthaway.org.au/)

**Telephone:** 0418 923 968

**Email:** [info@nuthaway.org.au](mailto:info@nuthaway.org.au)

## Salvation Army: Kalgoorlie-Boulder Corp

**Description:** The Salvation Army Kalgoorlie-Boulder activities include:

- The Shed (Youth Drop in Space)
- Second bite Harvest Table
- Positive Lifestyle Program
- Kalgoorlie Thrift Shop
- Doorways (Emergency Relief and Case management)
- CAMEO (Community Meal)

Visit their website for more information.

Food security aspect/s addressed:

Food access

\*Unconfirmed by the Food Community team

**Website:** [www.salvationarmy.org.au/locations/western-australia/w059/kalgoorlie-boulder-corps/](http://www.salvationarmy.org.au/locations/western-australia/w059/kalgoorlie-boulder-corps/)

**Telephone:** (08) 9021 2255

**Location:** 50 Oberthur Street, Corner Hopetoun Street, South Kalgoorlie, WA 6430

## School Breakfast Program

**Description:** Foodbank School Breakfast Program running across various schools in regional WA.

Visit their website for more information.

Food security aspect/s addressed:  
Food access

\*Confirmed by the Food Community team via an interview

**Website:** [www.foodbank.org.au/WA/school-breakfast-program/?state=wa](http://www.foodbank.org.au/WA/school-breakfast-program/?state=wa)

## Shire of Coolgardie: Foodbank Free Fruit

**Description:** Through a partnership with their local Foodbank, the Shire of Coolgardie gives out free fruit to the youth and wider community.

Visit their website for more information.

Food security aspect/s addressed:  
Food access

\*Confirmed by the Food Community team via an interview

**Website:** [www.coolgardie.wa.gov.au/](http://www.coolgardie.wa.gov.au/)

**Telephone:** (08) 9080 2111

**Email:** [mail@coolgardie.wa.gov.au](mailto:mail@coolgardie.wa.gov.au)

## SMYL Goldfields and Esperance

**Description:** SMYL assists people and local communities in making positive changes. They provide personal support, counselling, mentoring, advocacy and referral services.

Visit their website for more information.

Food security aspect/s addressed:  
Food access

\*Unconfirmed by the Food Community team

**Website:** [www.facebook.com/SMYLGoldfieldsEsperance/](http://www.facebook.com/SMYLGoldfieldsEsperance/)

**Telephone:** 1300 215 391

**Email:** [info@smylcommunity.com.au](mailto:info@smylcommunity.com.au)



## Policies or Strategic Plans

### #SaferLeonora Plan 2022-2027: Community Safety and Crime Prevention Strategy

**Description:** The Plan identifies priorities in community safety and crime prevention and directs efforts for building partnerships with key stakeholders and the community, enabling a multidisciplinary approach to address safety issues that may impact upon the community. It include objectives such as develop opportunities for vulnerable families and children to access food when in need.

Visit their website for more information.

Food security aspect/s addressed:  
Food access

\*Unconfirmed by the Food Community team

**Website:** [www.leonora.wa.gov.au/documents/481/saferleonora-plan-2022-2027#:~:text=The%20Plan%20identifies%20priorities%20in,may%2](http://www.leonora.wa.gov.au/documents/481/saferleonora-plan-2022-2027#:~:text=The%20Plan%20identifies%20priorities%20in,may%2)

**Telephone:** (08) 9037 6044

**Email:** [admin@leonora.wa.gov.au](mailto:admin@leonora.wa.gov.au)

### City of Kalgoorlie-Boulder Public Health Plan 2023-2027

**Description:** The City of Kalgoorlie-Boulder Public Health Plan outlines the longer-term vision, values, aspirations and objectives of the community over between 2023-2027 to ensure a healthy and happy community. Key priority areas include 'Access to fresh, nutritional and affordable food'.

Visit the document for more information.

Food security aspect/s addressed:  
Food availability  
Food access

\*Unconfirmed by the Food Community team

**Website:** [www.ckb.wa.gov.au/Profiles/ckb/Assets/ClientData/\\Documents/Our\\_City/News\\_and\\_Publications/Public\\_Health\\_Plan\\_-\\_VER-08\\_23.pdf](http://www.ckb.wa.gov.au/Profiles/ckb/Assets/ClientData/\\Documents/Our_City/News_and_Publications/Public_Health_Plan_-_VER-08_23.pdf)

**Telephone:** (08) 9021 9600

**Email:** [mailbag@ckb.wa.gov.au](mailto:mailbag@ckb.wa.gov.au)

### City of Kalgoorlie Boulder Strategic Community Plan 2020-2030

**Description:** Strategic Community Plan which includes aspirations such as developing a food hub at the airport site.

Visit their website for more information.

Food security aspect/s addressed:  
Food availability

\*Unconfirmed by the Food Community team

**Website:** [www.ckb.wa.gov.au/documents/329/strategic-community-plan-2020-2030#:~:text=Welcome%20to%20the%20City's%20Strategic,to%2](http://www.ckb.wa.gov.au/documents/329/strategic-community-plan-2020-2030#:~:text=Welcome%20to%20the%20City's%20Strategic,to%2)

**Telephone:** (08) 9021 9600

**Email:** [mailbag@ckb.wa.gov.au](mailto:mailbag@ckb.wa.gov.au)

### Healthy Weight Action Plan 2019-2024

**Description:** The WA Healthy Weight Action Plan 2019-2024 (hereafter, the Action Plan) is a joint initiative of WA Health, WA Primary Health Alliance, and Health Consumers' Council to create a roadmap for sustainable changes to support people and families who are at-risk of overweight (those at the high end of the healthy weight body mass index range) and those with overweight and obesity. It is the first step of many to create a coordinated approach across health to tackle the complex causes of overweight and obesity and work with our partners across WA to drive long-term change.

Food security aspect/s addressed:  
Food utilisation

\*Confirmed by the Food Community team via an interview

**Website:** [www.health.wa.gov.au/Articles/U\\_Z/WA-healthy-weight-action-plan](http://www.health.wa.gov.au/Articles/U_Z/WA-healthy-weight-action-plan)

**Telephone:** (08) 9222 0200

**Email:** [healthpolicy@health.wa.gov.au](mailto:healthpolicy@health.wa.gov.au)

## Shire of Esperance Public Health Plan 2021-2026

**Description:** A strategic document designed to guide an integrated health and wellbeing planning process for the purpose of protecting, promoting and enhancing the health, wellbeing and quality of life for the Esperance community. Development of the Plan involved research and engagement with the community and stakeholders to identify the current health and wellbeing needs of our community. As a result, three priority focus areas were identified:

- Healthy active lifestyle opportunities for all.
- A safe and protected community. and
- An inclusive, resilient & connected community.

Visit their website for more information.

Food security aspect/s addressed:  
Food availability  
Food access

\*Confirmed by the Food Community team via an interview

**Website:** [www.esperance.wa.gov.au/public-health-plan-2021-2026#:~:text=The%20Plan%2C%20required%20under%20the,of%20the%20Plan%20i](http://www.esperance.wa.gov.au/public-health-plan-2021-2026#:~:text=The%20Plan%2C%20required%20under%20the,of%20the%20Plan%20i)

**Telephone:** (08) 9071 0666

**Email:** [shire@esperance.wa.gov.au](mailto:shire@esperance.wa.gov.au)

## Shire of Laverton Public Health and Wellbeing Plan 2021-2025

**Description:** Public Health Plan including objectives such as preventing obesity and supporting healthy affordable food options.

Visit their website for more information.

Food security aspect/s addressed:  
Food availability

\*Unconfirmed by the Food Community team

**Website:** [www.laverton.wa.gov.au/documents/153/public-health-wellbeing-plan-2021-2025](http://www.laverton.wa.gov.au/documents/153/public-health-wellbeing-plan-2021-2025)

**Telephone:** (08) 9031 1202

**Email:** [eho@laverton.wa.gov.au](mailto:eho@laverton.wa.gov.au)

## Shire of Leonora Public Health and Wellbeing Plan 2021-2025

**Description:** Public Health Plan including objectives such as preventing obesity and supporting healthy affordable food options, healthy catering policies, healthy eating recipe promotion for takeaway/fast food outlets.

Visit their website for more information.

Food security aspect/s addressed:  
Food availability

\*Unconfirmed by the Food Community team

**Website:** [www.leonora.wa.gov.au/documents/461/public-health-and-wellbeing-plan](http://www.leonora.wa.gov.au/documents/461/public-health-and-wellbeing-plan)

**Telephone:** (08) 9037 6044

**Email:** [healthbuilding@leonora.wa.gov.au](mailto:healthbuilding@leonora.wa.gov.au)

## Shire of Menzies Public Health and Wellbeing Plan 2021-2025

**Description:** Public Health Plan including objectives such as preventing obesity and supporting healthy affordable food options, healthy catering policies, healthy eating recipe promotion for takeaway/fast food outlets.

Visit their website for more information.

Food security aspect/s addressed:  
Food availability

\*Unconfirmed by the Food Community team

**Website:** [www.menzies.wa.gov.au/documents/907/shire-of-menzies-public-health-and-wellbeing-plan-2021-2025](http://www.menzies.wa.gov.au/documents/907/shire-of-menzies-public-health-and-wellbeing-plan-2021-2025)

**Telephone:** (08) 9024 2041

**Email:** [healthbuilding@leonora.wa.gov.au](mailto:healthbuilding@leonora.wa.gov.au)



## Businesses, Networks or Alliances

### Bush Ghoodhu Wongutha Tours

**Description:** Bush Ghoodhu Wongutha Tours is a family business and are passionate about their Country and culture. They offer a range of cultural experiences both in and around the town of Kalgoorlie, Western Australia.

Visit their website for more information.

Food security aspect/s addressed:  
Food access  
Food utilisation

\*Unconfirmed by the Food Community team

**Website:** [www.facebook.com/bushghoodhu/](http://www.facebook.com/bushghoodhu/)

**Telephone:** 0474 971 548

**Email:** [tours@bushghoodhu.com.au](mailto:tours@bushghoodhu.com.au)

### Dabungool Cultural Experiences

**Description:** Dabungool explores the Aboriginal history of Kepa Kurl (Esperance) on Western Australia's south coast.

Visit their website for more information.

Food security aspect/s addressed:  
Food access  
Food utilisation

\*Unconfirmed by the Food Community team

**Website:** [www.dabungool.com.au/](http://www.dabungool.com.au/)

**Telephone:** 0455 031 797

### EPIC Goldfields: Epicafe

**Description:** Epicafe is a transition into work program, to help staff gain meaningful employment. Staff learn customer service skills, how to process financial transactions, Eftpos training, barista skills and food safety.

Visit their website for more information.

Food security aspect/s addressed:  
Food utilisation

\*Unconfirmed by the Food Community team

**Website:** [www.facebook.com/EpicafeGoldfields](http://www.facebook.com/EpicafeGoldfields)

**Telephone:** (08) 9185 0071

### Goldfields Honey Ant Tours

**Description:** Authentic bushfood foraging tour in the heart of Australia's Golden Outback.

Visit their website for more information.

Food security aspect/s addressed:  
Food access  
Food utilisation

\*Unconfirmed by the Food Community team

**Website:** [www.goldfieldshoneyanttours.com.au/](http://www.goldfieldshoneyanttours.com.au/)

### Goldfields Organics Co-Operative

**Description:** They work together to bring organic, wholesale produce to Kalgoorlie, Western Australia.

Visit their website for more information.

Food security aspect/s addressed:  
Food availability

\*Unconfirmed by the Food Community team

**Website:** [www.facebook.com/GoldfieldsOrganics/](http://www.facebook.com/GoldfieldsOrganics/)

**\*For amendments or additions to this document, please contact the Food Community team**



[foodcommunity@ecu.edu.au](mailto:foodcommunity@ecu.edu.au)



[@ecufoodcommunity](https://www.facebook.com/ecufoodcommunity)



[www.foodcommunity.com.au](http://www.foodcommunity.com.au)



Government of Western Australia  
WA Country Health Service



Centre for People,  
Place & Planet  
STRATEGIC RESEARCH CENTRE

